

Using Data Placemats to Understand and Interpret Evaluation Data

MeHAF Learning Community
Meeting

March 8, 2017



S. E. Foster Associates
Research & Evaluation Consulting

What is a Data Placemat?

- Graphic display of evaluation data
- Enables evaluator to share information with grantees before it is final
- Grantees discuss, interpret the meaning of the information, and offer explanations and examples
- Evaluators use the input for further analysis and report writing

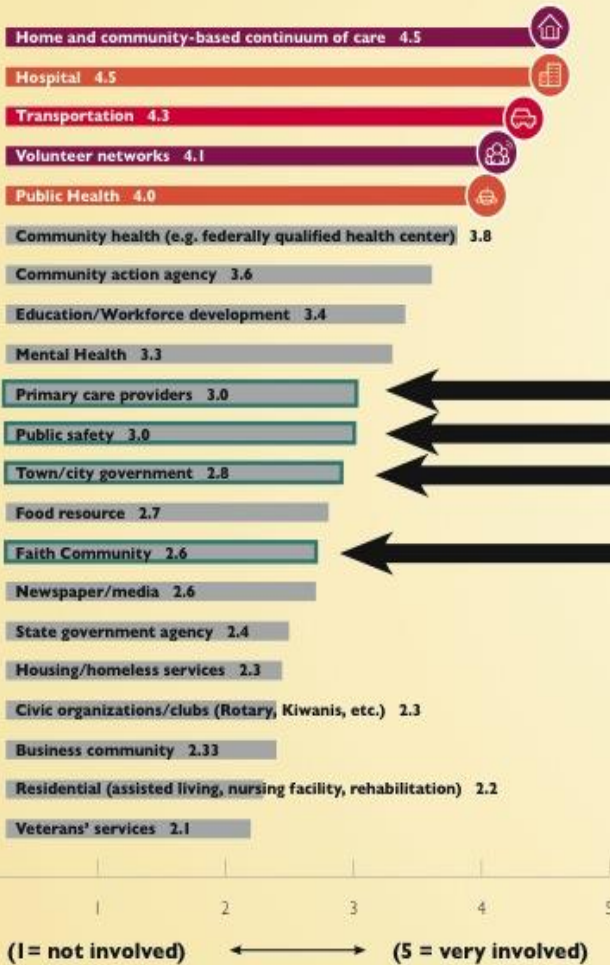
Healthy Communities

Access to Quality Care

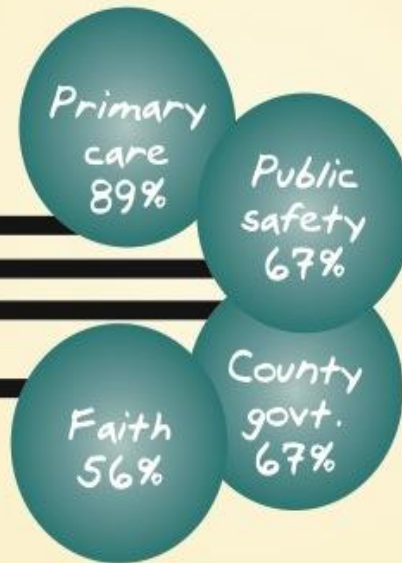
Thriving in Place

I. Partnerships

How involved is each sector?



Grantees want more involvement from:



45% of grantees wanted more involvement from volunteer networks, state government, veteran's services, civic organizations

“ Grantee Reflections

“The level of commitment has been strong, even when the grind of implementation kicks in.”

“We have a keen interest in palliative/end of life care. WE decided to take it on as an advisory council.”

“We met with each medical practice—they LOOKED committed, but there were very few requests from them to get more engaged. The patient-centered medical home movement has pushed PCPs to have people connected to community, but they are not interested in doing more than they have to.”

Add your reflections below:



**Scored 2 or below: Library, county government agency, substance use prevention/treatment, tribal council
Data Sources: Summer 2016 Annual Survey, project director interviews, and progress reports.

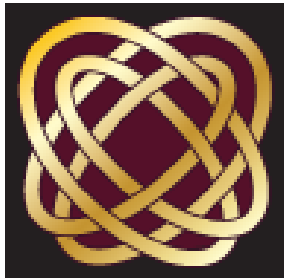
Placemat Information Sources

- ***Surveys***: 27 of 29 (93%) grantees
(19 Planning, 9 Implementation)
- ***Interviews***: 28 of 29 (97%) of project directors
- ***Progress reports***

Core Questions

- What questions do you have about the data?
- What do you see in the data? Is this what you expected?
- What is one thing you noticed that's interesting to you?

Questions? Comments?



S. E. Foster Associates

Research & Evaluation Consulting